



ALROUF EX PROOF LINER LIGHT H-SERIES



Applications

Oil and Gas Industry

- All petroleum production and refining
- Petroleum loading and transportation
- Petroleum storage and retail
- LNG industry
- All mining operations and service

Chemical Industry

- All types of paint facilities
- Chemical production and storage
Ocean, marine and aerospace field
- Ocean platform operation facilities and structure
- Aerospace clean room and production
- Ocean vessel operations

Metal Treatment

- Steel and aluminum factories
- Pumping stations in any environment
- Metal smelting, foundry and fabrication

Food and Alcohol Industry

- Flour and fine particle production and storage
- Food and distilling production
- Alcohol industry



Other high humidity, high dust, high temperature, vapor locations

Explosion Protection

Marking Atex

II 3 G Ex ec IIC T6...T3 Gc

II 2 D Ex tb IIIC T80/T95/T130

Marking IECEX

Ex ec IIC T6...T3 Gc

Ex tb IIIC T80°C/ T95°C/ T130°C

Marking UL844(North American)

Class I, Division 2, Groups A, B, C, D

Class II, Division 1, Groups E, F, G

Class II, Division 2, Groups F, G

Class III

Marking Marine

UL 1598A ABS

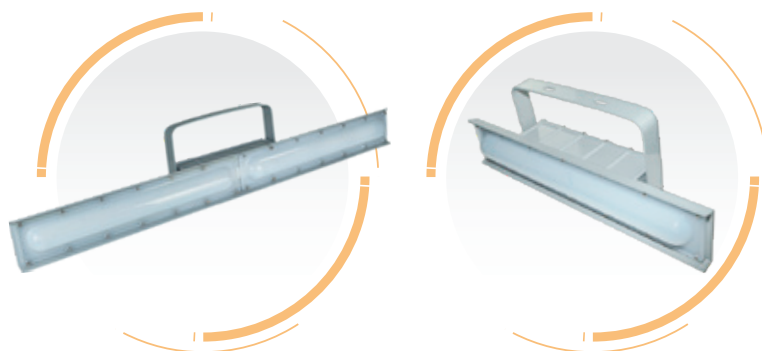
Other Rating IP 66

Light Distribution

120D

	Center Beam fc	Beam Width	
10ft	25fc	30ft	34ft
20ft	6fc	59ft	67ft
30ft	3fc	89ft	100ft
40ft	1fc	148ft	134ft
50ft	0.6fc	178ft	168ft

■ Vert, Spread; 120°
■ Horiz, Spread; 120°



Typical Model Specification

Product Number	Wattage	Color Temperature	Voltage	Lumens	Warranty	CRI
EX-20W H2N50D120	20	2200K-7000K	AC100-277V IC 100-277V AC 200-480V DC 12-48V	2800	5 years	>70 or >80
EX-40W H2N50D120	40			5600		
EX-40W H4N50D120	40			5600		
EX-60W H4N50D120	60			8400		
EX-80W H4N50D120	80			11200		

"H2, H4"=Product code "Y"=D or N: Dimmable or Non-dimmable "Z"=CCT, from 2200~7000K "D"=Beam angle, D120 for 120°. A for cover info. blank for flat cover, C spherical cover.

Packing Information

Model	Quantity/Carton	Length(cm)	Width(cm)	Height(cm)	Net weight(kg)	Gross weight(kg)
H2	2	69.1	41.3	29	4	9
H4	2	130	40	29.5	5.5	14.5

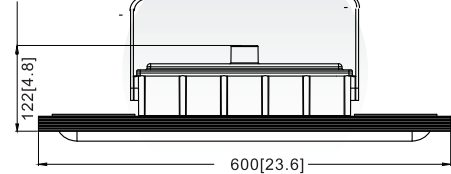
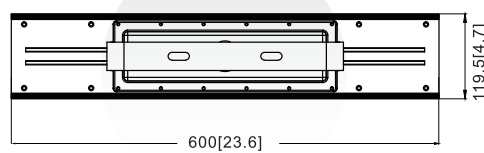
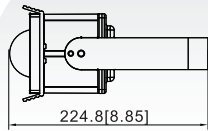
Certification



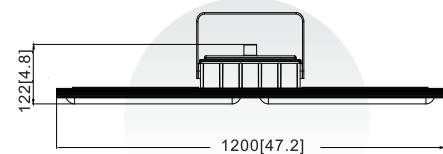
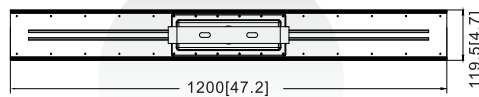
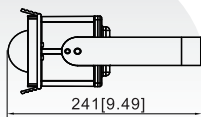
Dimension

H2 Series

Unit: mm or inch

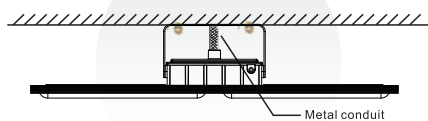


H4 Series

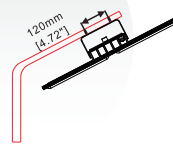


Mounting

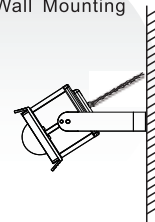
No.1 Ceiling Mounting



No.2 Pole Bracket Mounting



No.3 Wall Mounting



Features

- Working Temperature: -40°C ~ +60°C.
- High quality SMT LED and Meanwell Driver.
- Light-weight design by aircraft aluminum.
- Heavy-duty and high impact resistance.
- Three connection cable entry points.
- Replaceable LED board and drivers.
- Integrated junction box for driver with emergency back up.
- Dimmable and battery back up function available.
- Marine rating powder coated appearance treatment.
- Up to 5 years limited warranty option.
- Emergency Battery back up to three hours.
- Various installation ways for different applications.
- Glass lens or Glass with polycarbonate lens to make bigger beam angle

Accessories



Bracket



Metal Conduit



Bended Pipe