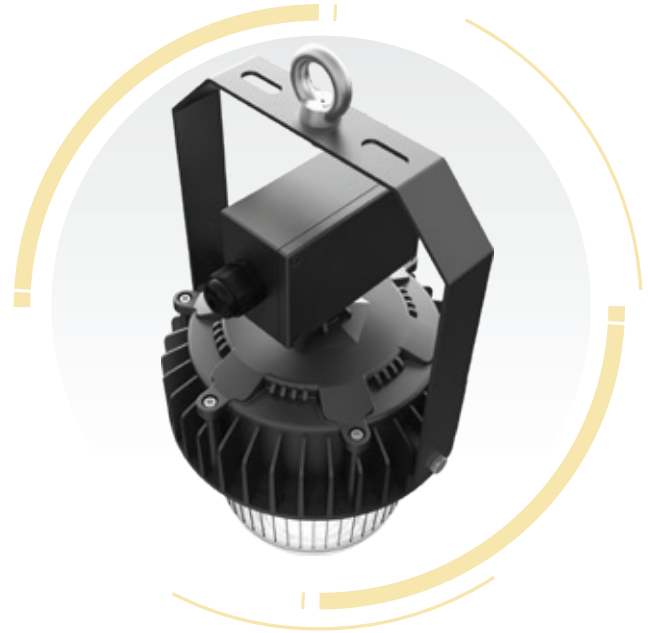




ALROUF WELL GLASS LUMINARE



Performance

LEDs Philips Lumileds	IK IK10
36W	IES 120°(PC) / 120°(Tempered Glass)
CCT 3000K, 4000K, 5000K, 5700K, 6500K	Corrosive resistant polyester powder coat finish
CRI ≥70	Operating Temperature:-30°C to +55°C (-22°F to 131°F)
L70>100,000hours	Storing Temperature:-45°C to +80°C (-49°F to 176°F)
AC 100~277V	Sosen / Inventronics
PF 0.95 min	130lm/W
IP66	

Certification



RoHS CB



Reminiscence Meets Innovation

Victor is a robust general-purpose luminaire with a reminiscent design of industrial environments. It offers a durable and versatile solution for many applications, especially in exposed conditions with high levels of dust and moisture, such as bridges, paper mills, power plants, ports and rail yards, petrochemical facilities, water and waste water treatment plants, perimeters and secure areas.

Victor comes with the mains and emergency version from the backup battery, and sturdy glass or diffused polycarbonate lens options. Producing 4,680lm light output and suitable for a wide range of ambient temperatures from -45°C to +50°C. It is a perfect replacement of traditional incandescent and most tungsten halogen lights for both indoor and outdoor applications, and operates for up to 50,000 hours eliminating relamping in many applications.

Excellent Performance

The waterproof Victor lights are durably constructed with fully-sealed, vibration-resistant housings.

It is a perfect replacement of traditional incandescent and most tungsten halogen lights for both indoor and outdoor applications, and operates for up to 50,000 hours eliminating relamping in many applications.

High Durability: Victor lighting has higher durability compared to its standard lighting counterpart. The fixtures are built with sturdier and heavier materials to withstand harsher working environments.

Greater Efficiency: Victor light is more energy efficient compared to traditional lighting fixtures. Running at 130Lm/m, it saves up to 70% energy than a legacy light.

More Eco-Friendly: Victor light does not contain toxic or harmful substances, such as mercury and lead, that are harmful to the environment.

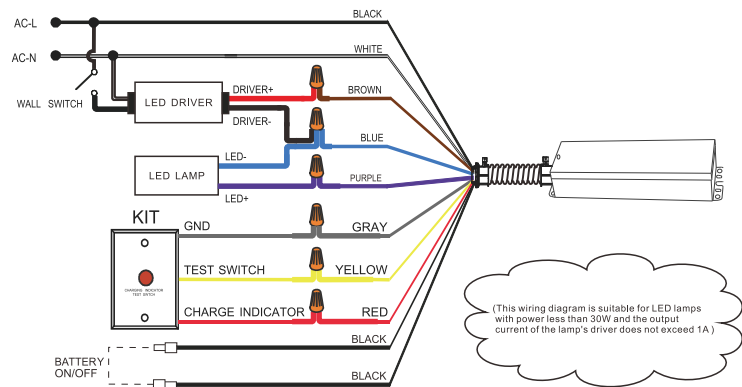
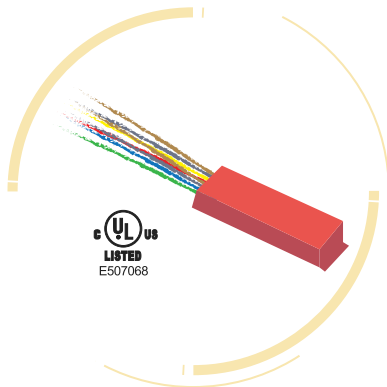


Emergency Power Pack (Optional)

Emergency power pack installed in the light fixture as an option to provide ≥ 90 mins emergency lighting, which is switched on automatically in case of external power cut off.

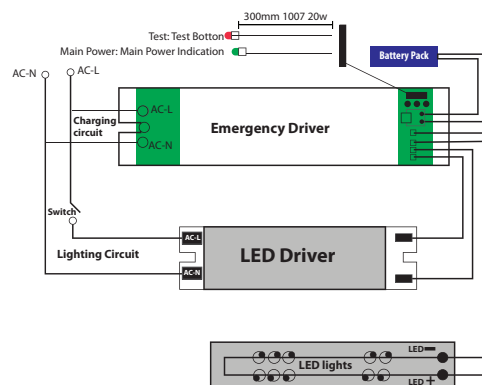
For North America Market

Rated Voltage	AC 100-277V	Emergency Time	≥ 90 MIN	Switch-over Time	≤ 1 S
Main Power Consumption	5W	IP Rating	IP65	Battery Specification	LH-ON/3.6V/2600mAh
Charging Time	≤ 24 H	Operating Temperature	0°C-55°C	Control	Individual Control



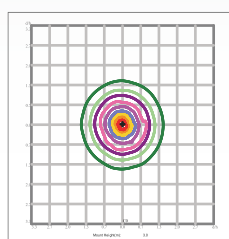
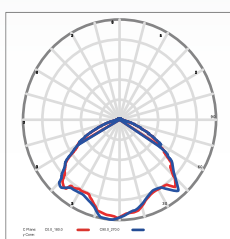
For EU & Other Market

Rated Voltage	AC 100-277V	Emergency Time	≥ 90 MIN	Switch-over Time	≤ 1 S
Main Power Consumption	≤ 15 W	IP Rating	IP65/IP30	Battery Specification	Ni-cd/12V/1500mAh
Charging Time	≤ 24 H	Operating Temperature	-10°C-55°C	Control	Individual Control

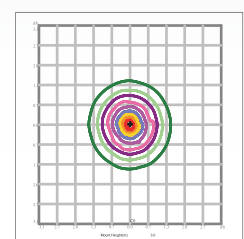
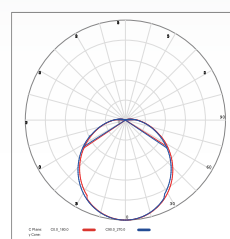


Photometrics

120 DEGREE (Tempered Glass Lens)



120 DEGREE(PC LENS)



Junction Box For Higher Safety And Convenience

Key Components

	Material:	ADC12
	Sealing ring:	Silicone rubber
	Screw:	SUS304
	Color:	Yellow I Grey
	IP rating:	IP66
	Size:	125 x 80 x 57(mm)
	Weight:	0.1SKg
	Model:	M25-2
	Material:	PA66
	Sealing ring:	Silicone rubber
	Thread size:	M25
	Wire size:	Round cable 3 x 2.5mm ²
	Color:	Black
	IP rating:	IP67
	Material:	SUS304
	Thread size:	2-G3/4
	Color:	Silver
	IP rating:	IP67
	Size:	30 x 30 x 40(mm)
	Weight:	0.06Kg
	Brand:	WAGO
	Model:	222-415
	Material:	Flame retardant PC
	Color:	Silver Grey
	Size:	20.5x17x14.5(mm)
	Voltage:	400V
	Current:	32A
	Surge voltage:	4KV
	Wire size:	1.0-2.5mm ²
	Wire length:	8.0-10mm
	Brand:	ViD
	Model:	UC05
	Material:	Flame retardant PC
	Color:	Clear
	Size:	29.8x20.5x10.5(mm)
	Voltage:	450V
	Current:	32A
	Wire size:	0.2-4.0mm ²
	Wire length:	11mm

Specifications

Model	Power	Efficacy(IES)	Total Lumen	N.W	Product Dimensions
EO-VIC-36	36W	130lm/w	4,680lm	4.0kg/8.8lbs	405x227x227mm (15.9x8.9x8.9in)
EO-VIC-36 PC	36W	130lm/w	4,680lm	3.85kg/8.5lbs	365x227x227mm (14.4x8.9x8.9in)

Installation

For high performance and long term reliability, the light should be installed in free air.

Hanging Ring Mount

- 1.Tighten the NUT attached to the hanging ring to ensure the hanging ring is securely connected to the light fixture.
- 2.Hang the ring to the field supplied by the mounting hook or chain.
- 3.Wiring.(Connect supply wires to luminaire wire leads per the wiring diagram using methods that comply with all applicable codes.)

Universal Bracket

- 1.Rotate the bracket to the desired angle and tighten screw to lock it.
- 2.Bolt the universal mounting bracket to the field mounting point. Bolt the center point before the two side points. Tighten the bolts to wrench tight.
- 3.Wiring.(Connect supply wires to luminaire wire leads per the wiring diagram using methods that comply with all applicable codes.)

