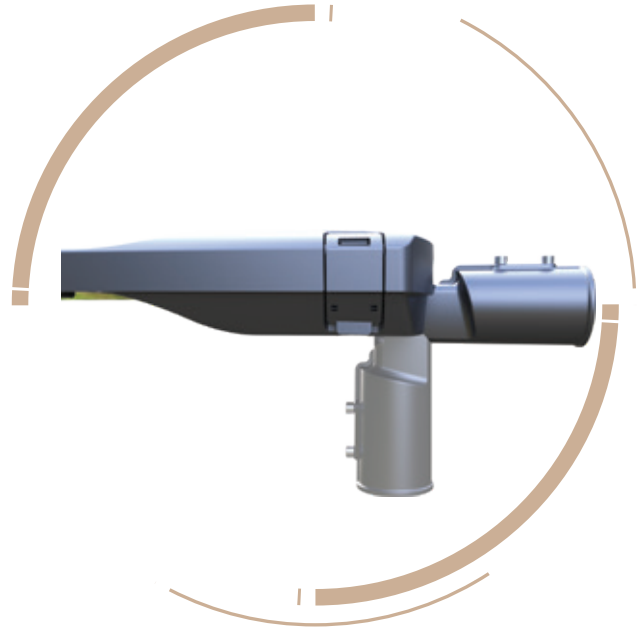
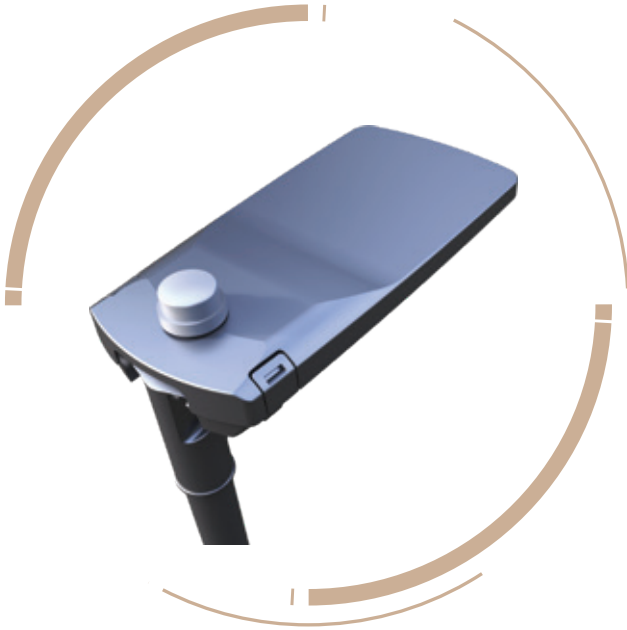




ALROUF STREET LIGHT FREE DIE CAST



Performance

LEDs Philips Lumileds	IP66
10W~200W	IK08
CCT 4500~5500K (2500~6500K Optional)	IES 80x150° / 85x155° / 90x150° / 100x150°
CRI ≥70	Operating Temperature:-45°C to +45°C (-49°F to 113°F)
L70>100,000hours	Storing Temperature:-45°C to +80°C (-49°F to 176°F)
AC 100~277V	132lm/W~145lm/W
PF 0.95 min	3G Vibration
	Inventronics / Sosen

Certification



Time to Change

Icon is a perfect lighting solution for municipalities looking for a fast return on investment. As a true point-to-point replacement solution for conventional light sources, the compact luminaire, with elegant finless design, is eco-friendly and easy to install with its tool-free access to gear tray and tool-free replacement of the component in the gear compartment.

Icon is available with a number of different optics and lumen packages that can even be tuned further to fit exact project requirements. Its universal spigot is adapted to both posttop and side-entry mounting.

With future-ready socket and could be paired with any control system, Icon could achieve up to 75% of energy savings compared to conventional lamp systems.



Product Features

- System Light efficacy 140 LPW.
- Rugged one-piece die cast housing with corrosive resistant polyester powder coat finish body.
- Multiple choices of optical lenses for true type and type street lighting pattern.
- Tool free access for easy installation, direct slide-in mount.
- IP66 water and dust proof.
- 3G Vibration & IK08 impact resistance.
- 5-10 Years Warranty.

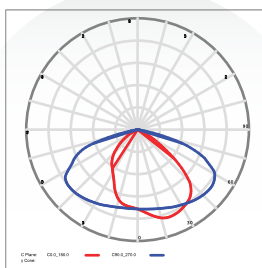


Typical model specification

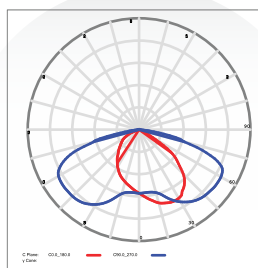
Part #	Power	LEDs Qty	Lens Qty	Out Current (Each Chis)	Efficacy (IES)	Total Lumens	N.W	Product Dimension
ALROUF-STL	10W	24	2	63mA	145lm/w	1450lm	4.0kg/8.8lbs	577x233x103mm 22.7x9.2x4.1in
	20W	32	2	95mA	140lm/w	2800lm		
	30W	48	4	95mA	140lm/w	4200lm		
	40W	60	4	102mA	140lm/w	5600lm		
	50W	60	4	125mA	135lm/w	6750lm		
ALROUF-STL	60W	72	6	125mA	137lm/w	8220lm	4.0kg/8.8lbs	627x272x103mm 24.7x10.7x4.1in
	70W	96	6	112mA	143lm/w	10010lm		
	80W	96	6	126mA	140lm/w	11200lm		
	90W	96	6	145mA	137lm/w	12330lm	5.0kg11.0lbs	
	100W	96	6	155mA	135lm/w	13500lm		
ALROUF-STL	110W	112	7	152mA	132lm/w	14520lm	5.0kg11.0lbs	627x272x103mm 24.7x10.7x4.1in
	120W	144	9	130mA	142lm/w	17040lm		
	130W	144	9	140mA	139lm/w	18070lm		
	140W	144	9	150mA	137lm/w	19180lm		
	150W	144	9	155mA	135lm/w	20250lm		
ALROUF-STL	160W	192	12	130mA	137lm/w	21920lm	6.0kg13.2lbs	767x300x103mm 30.2x11.8x4.1in
	170W	240	16	112mA	140lm/w	23800lm	6.5kg14.3lbs	
	180W	240	16	120mA	138lm/w	24840lm		
	200W	240	16	130mA	135lm/w	27000lm		

Photometrics

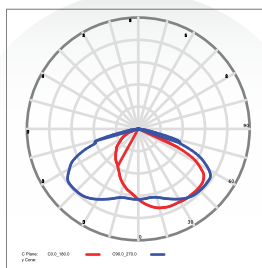
80x150(Type II -S)



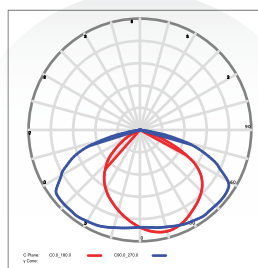
85x155(Type II -S)



90x150(Type III -S)



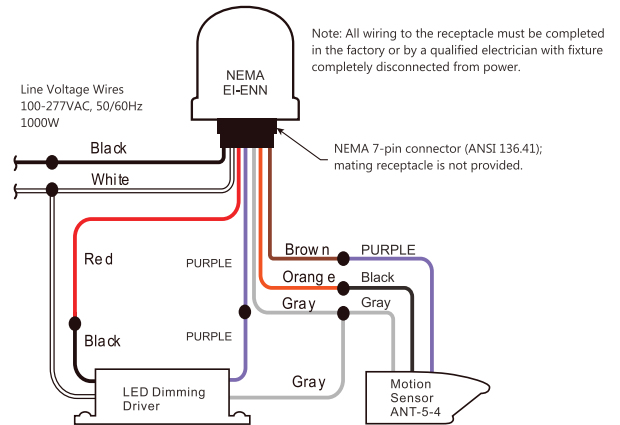
100x150(Type III -S)



Electrics

Future Ready NEMA/Zhaga Connection

Ready NEMA or Zhaga socket to enable further control of streetlight from simple photocell to smart city controller node.



Tool-free Access

In order to avoiding the inconvenience and safety hazards of multi-tool operation, Icon series street light is designed with tool free access to facilitate high-altitude installation and maintenance by maintenance personnel.



Installation

For high performance and long term reliability, the light should be installed in free air.

Slip Fitter Mount

- 1. Unlock the screws, adjust the angle of slip fitter.
- 2. Feed the power cord through the pole and make wiring.
- 3. Slide the fixture onto the pole, lock the screws.