

alruff
LIGHTING TECHNOLOGY CO. Ltd.



شركة الروف
لتقنية الإنارة المحدودة



Explosion Proof LED Hand Lamp

360 Beam Angle

Top hook

Explosion Proof LED Hand Lamp 360 Beam Angle Top hook



The lights in this series are capable of offering portable illumination for hazardous locations and temporary projects, such as quick plant turnarounds, MRO projects, oil fields, marine sites and tank cleaning etc. Our Portable Electric Hand Lamps are designed for Zone 1, Zone 2, Zone 21, Zone 22 environments.

Precautions during application:

- WARNING** – DO NOT OPEN WHEN ENERGIZED”
- WARNING** – DO NOT OPEN WHEN AN EXPLOSIVE ATMOSPHERE IS PRESENT” ;
- WARNING** – POTENTIAL ELECTROSTATIC CHARGING HAZARD - SEE INSTRUCTIONS”
THE FLAMEPROOF JOINTS ARE NOT INTENDED TO BE REPAIRED.

Features

- Industry-leading efficacy: up to 100lm/W±5
- -40°C to +50°C Ambient operating temperature
- Swivel hook for hanging and hands free operation
- Prevent drop damage
- 5 years warranty
- Housing -Aluminum alloy (ADC12)
- Lens - tempered glass
- Beam angle:360°

- End user shall use certified cable gland type of protection for final installation purpose.
- Under rating condition, maximum temperature on the luminaire's shell shall not be higher than 80°C for T6. Temperature at cable inlet shall not be higher than allowable limit of the cable applied, to ensure the cable operation normally. The branch point is 60.1°C and cable entry point is 52.0°C.
- For handle, there is “POTENTIAL ELECTROSTATIC CHARGING HAZARD”. When used in the explosive environment, please touch with an insulating object, wipe with a damp cloth.

Parameters

Power:	10W / 20W / 30W / 40W	LEDs:	3030
Input voltage 1:	AC100V-277V Frequency: 50/60Hz	LED Driver:	High Efficiency LED Driver
Input voltage 2:	DC110V	Entry Size:	M20X1.5
Input voltage 3:	DC12V-24V	Dimension:	Φ101.5 x 516.5 mm
Lumen flux:	1000LM/2000LM/3000LM	Lamp base :	e27
CCT:	3000K, 4000K, 6500K (Optional)	Weight:	2.4KG

FEATURES OF HAND LAMP

الضميمة: EX-d كما هو: 2148/81
و2206 (الجزء الأول)

ENCLOSURE: EX-d AS PER IS:
2148/81 & 2206 (PART-I)

حامل المصباح: حامل المصباح من البورسلين
LAMP HOLDER: PORCELAIN LAMP HOLDER

مادة البناء: سبائك الألومنيوم المصبوب LM-6 أو
الحديد الزهر
MATERIAL OF CONSTRUCTION:
CAST ALUMINIUM ALLOY LM-6 OR CAST IRON

تصنيف 100 واط، GLS عند 230 فولت
RATING 100W, GLS AT 230V

لمسة نهائية من الإيبوكسي باللون الرمادي
الفتح 631- كما هو: 5

FINISH EPOXY LIGHT GRAY SHADE-631
AS PER IS:5

الحماية: IP-55 كما هو: 2147/62
PROTECTION: IP-55 AS
PER IS:2147/62

تصنيف المنطقة: مجموعة الغاز IIA
وIIB وفقاً لـ: 2148/81
AREA CLASSIFICATION: GAS GROUP
IIA & IIB AS PER IS:2148/81

الحشية: حلقة لا نهاية
لها من النيوبرين
GASKET: ENDLESS 'O'
RING NEOPRENE

الزجاج: النوع المقوى "أ"
GLASS: TOUGHENED TYPE-'A'

إدخال الكابل:
1NO.-1/2" NPT/BSP
أو 3/4"ET/BSC

CABLE ENTRY:
1NO.-1/2" NPT/BSP
OR 3/4"ET/BSC.

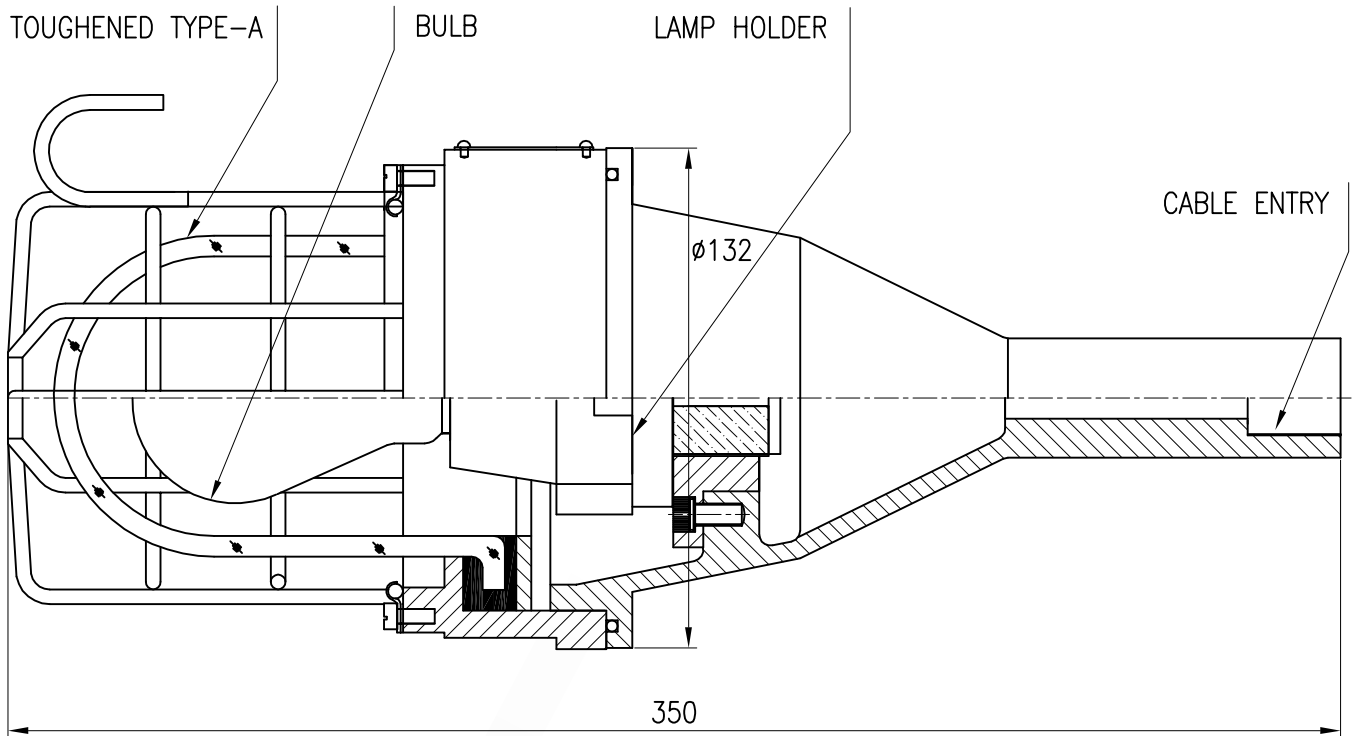
التأريض:
1NO. داخلي ورقم 1. خارجي

EARTHING:
1NO. INTERNAL &
1NO. EXTERNAL

الوزن: 2.300 LM-6 كجم (تقريباً)
WEIGHT: LM-6, 2.300 Kg.(Approx.

الأجهزة: اتش تي اس. مطلبي
HARDWARE: HTS. ELECTROPLATED

Dimensions



Available Accessories

SS Gland / Nickel Gland



Extended Cable



12V / 24V Transformer (Step Down)



**Dammam
Head Office**

Prince Metib St, Izdihar District,
Alrouf Trading Building,
Dammam 34252,
Saudi Arabia.

Contact person:
Mr. Syed Thajudeen
Mobile: +966-592350834

**JEDDAH
Branch Office**

Commercial Centre for
Dr.Hassan Nasr
Baladiyah Street,
Al Aziziyah District.

Contact person:
Ahmed Faris
Mobile: +966-564727973

**ABHA
Branch Office**

Southern Region,
Khamis Mushait,
Kingdom of Saudi Arabia.

Contact person:
Malik Bashir
Mobile: +966-557384869

**RIYADH
Branch Office**

Contact person:
Hassan Said Hassan Ibrahim
Mobile: +966 56 569 3789



alrouf
LIGHTING TECHNOLOGY CO.Ltd.



شركة الروف
لتقنية الإنارة المحدودة

www.alroufled.com